



Primary hyperparathyroidism: a giant and unusual location of parathyroid adenoma

Zafer Pekkolay¹, Hüsna Saraçoğlu¹, Mehmet Turgut¹, Mehmet Serdar Değirmenci¹, Alpaslan Kemal Tuzcu¹
Dicle University, School of Medicine, Department of Endocrinology, Diyarbakır, Türkiye

Aim:

- Solitary functioning parathyroid adenomas account for up to 90 percent of primary hyperparathyroidism. Parathyroid adenoma can sometimes be in unusual localization.

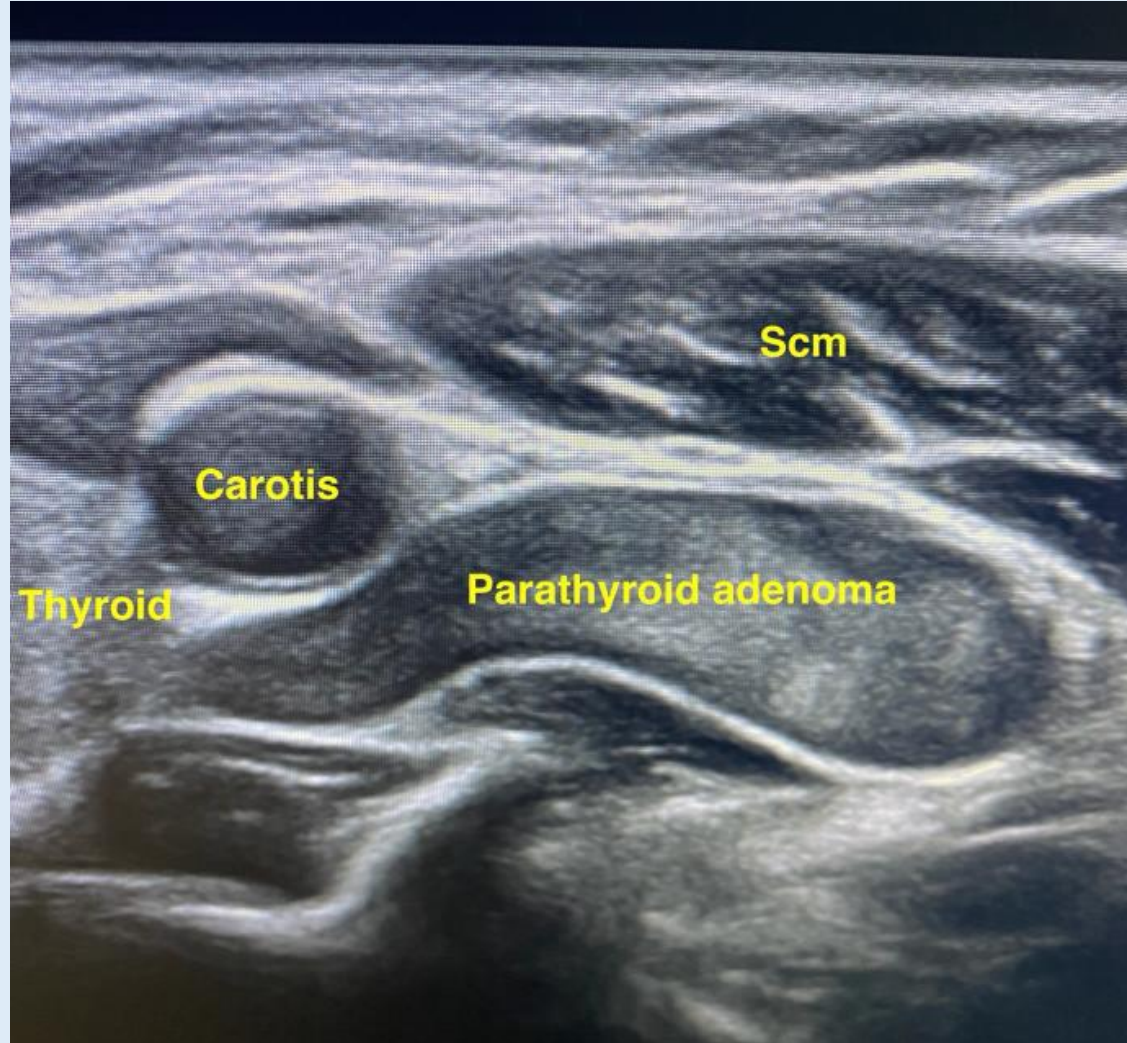
Case presentation

- Hypercalcemia was detected in the blood biochemistry of a 42-year-old woman who complained of nausea and vomiting. In the evaluation, a diagnosis of primary hyperparathyroidism was made.
- **Labs: Calcium:** 13,8 (8,8-10,6) mg/dl, Phosphorus: 2,7(2,5-4,5) mg/dl, Parathormone 404,3 (14-72) ng/L
- **Neck Ultrasound:** Giant parathyroid adenoma on the left of the neck

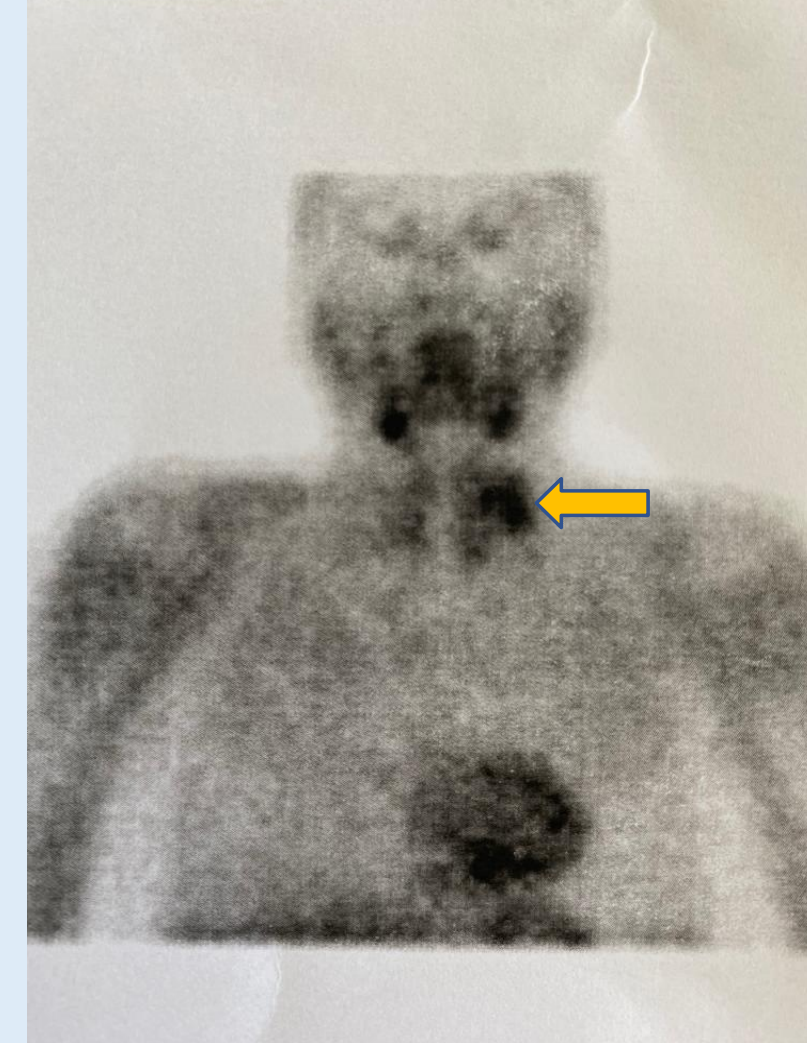
Clinical course: 3000 ml/day saline and furosemide 40 mg/day were given for treating hypercalcemia. Localization was confirmed by parathyroid scintigraphy and the calcium level was reduced to 11,6 mg/dl with intravenous ibandronate. She was referred to surgery for parathyroid adenomectomy.

Figure 1: Giant and unusual location parathyroid adenoma

A-Neck Ultrasound



B-Parathyroid scintigraphy



Conclusion

- Ectopic parathyroid adenoma may be localized in the thymus, carotid sheath, and retro-esophageal. Detailed neck ultrasonography makes it easier to find parathyroid adenoma.

Keywords: primary hyperparathyroidism, giant parathyroid adenoma, unusual location parathyroid adenoma